



Bits and Pieces

Brazos Bluebonnet Quilt Guild Newsletter

Volume 36, No. 10, October, 2014

Anne Perry, Editor Michael Jackson, Co-Editor

BBQG President's Message – October, 2014

As you know, I recently spent some time with someone who is near and dear to my heart. My Mom (82 years young) had hip surgery, and I spent a week with her after my sister left. It was a very, very interesting week. She lives in a small town, and she does not have very many modern conveniences (no Internet, no clothes dryer, no dishwasher, no mop, no "real" TV, etc.), so I was feeling quite "Amish." It was small town living; I would walk to the grocery store and the post office, hang clothes on the line, scrub floor on hands and knees, wash dishes in the sink and go through withdrawals about my lack of Internet and not watching TV. However, it is not about ME!

I loved the fact that Mom and I had some heart to heart talks, and I would kiss her on the cheek each night before bed and tell her "I Love You." Each night she would struggle getting in and out of bed and would get so frustrated about it. Keep in mind that my Mom is not a real positive person, and this was depressing her even more. Feeling powerless, she would get caught in a vicious cycle of despair, depressions and exhaustion with no end in sight. Her muscles would tense up at the thought of trying to get in that bed. It was apparent that her mental state of mind was not helping the situation. I kept thinking, "How Can I Help Her?" The light bulb came on, and I remembered something I read about helping people who are down and out, find power again: 1) Model it, 2) Offer it, 3) Support it, 4) Release it.

So when Mom got up from bed in the middle of the night (we did this every 2-3 hours all night every night because of her pain), I sat next to her and said, "Look what I found on Google with my phone" and showed her the You-Tube on "How To Get In and Out of Bed properly after Hip Surgery"....thank God for You-Tube. (I am sure that they showed her at hospital, but it somehow was not registering.) Looking at my small phone, we watched that video over and over again, stopping and starting until it was a firm image in her mind. When we went back to bed, I realized that we needed to switch sides of the bed for her task to be easier, so at 2:00 a.m. we are rearranging the room. After that, each time she got in and out of bed, I was her cheerleader. She did much better each day and even though not perfect, I had done all I could do, and it was time for me to go home. Model, Suggest, Support and Release. Mom was on her way out of that slump.

...continued on page 2

September's Membership Report:

79 members, 6 guests and 246 volunteer hours reported.

Welcome to new members: Ann Gilreath and Suzanne Milstead

Terry Skrabanek
Owner

Exquisite Fabrics & Classes
Notions Patterns Books
Authorized BabyLock Retailer
Handi Quilter Rep

LONE★STAR Quiltworks

4301A S. Texas Ave.
Bryan, TX 77802
www.lonestarquiltworks.com

(979) 595-1072
FAX (979) 595-1074
lonestarquiltworks@suddenlink.net

continued from page 1...

In the past, I have seen many of my friends and family, as well as myself, go through particular depression states of mind at different times. It pains me to see anyone unhappy, depressed and feeling so powerless. At one point or another, most of us will find ourselves in a spot like this. How can we help? This is so perfect: 1) Before you preach it -- MODEL IT; 2) When you do speak, do so gently offering an alternative -- OFFER IT; 3) Hold them in your mind not as struggling or helpless, but learning their own strength and abilities -- SUPPORT IT; and 4) Then you have to let go and move on -- RELEASE IT. Even though this is a story relating to something simple, I just want to say that it was a learning process for me. We all have people in our lives (children, friends, colleagues, partners, etc.) within whom we could see a greater person if we practice these four ideas of being, as much for yourself and your own growth as theirs.

Norma Reel
President, BBQG

October Board Meeting Notice

The October Board meeting will be Monday, October 6, 6 p.m. at Hobby Lobby.



Above, Dorothy Kelly's quilt presented at Show 'N Tell in September.



Above, Dottie Wilson's quilt presented at Show 'N Tell in September.



Tickets & Price Tags

I've been thinking about the donation quilt ticket sells & how they relate to what we do—what we enjoy.

We all enjoy the programs. We enjoy seeing the students receive the scholarships each year. All these things wear a price tag. The August speaker's price tag was \$1,387.00. Worth every dime. Every speaker that stands before us teaching & entertaining wears a price tag. Our scholarships have a \$2,000 price tag. Oh—we don't SEE the tag dangle like one from a pair of Gingher scissors, but it's there.

Our yearly membership dues do not cover all of our REAL expenses much less our FUN stuff.—One-half of our income from dues goes to pay for the Brazos Center room rentals. Our fun things—programs & workshops—are funded by donation quilt ticket sells. The sells keep the guild functioning to the level we are. It is not just a tradition to sell them.

If we all bought/sold \$20 worth, we'd bring in about \$3,000. That's a start, but doesn't cover all things. That's where selling to other folks & setting the quilt up at different places comes in. The guild has done so much for 30 years & it takes all of us to keep it going & functioning at its current level.

So buy some tickets, sell some tickets. And when we are enjoying our speakers, let's remember the price tag that is attached to them.

Rebecca Tucker is now Rebecca Fielding--a newlywed in our midst!

FOUND: A pair of sunglasses found after meeting. If you have lost a pair, please contact Sue Sprott (bssprott@gmail.com) for reuniting with them.

Sue Sprott
President-Elect

Right, Nini Hodges presented her traditional President's Quilt gift to Sherrill Johnson; the presentation was delayed by Nini's illness, now in remission.

** Special Announcement and Volunteers Needed **

As you know our Guild has been in a desperate need of a Chair for the Donation Quilt 2015. We have been very fortunate to have **Luci Smith** for so many years head up Raffle/Donation Quilt Events ---BIG THANKS TO LUCI FOR ALL HER YEARS OF SERVICE!

Time Marches on, life happens and Jo Ann Williams stepped in to take over the Donation Quilt when Luci's health would not allow her to continue this duty in the midst of 2014. Again, big thanks to JoAnn Williams for stepping up to bat.....NOW HERE WE ARE approaching 2015 asking desperately for someone to raise their hand. AND SOMEONE DID!

Welcome and BIG, BIG, BIG THANKS TO

KERRY DWYER our new Donation Quilt Chair for 2015. Kerry has agreed to this commitment for this year at the moment. Please give Kerry your support and make note that she is completely and fully in charge of any and all events involving the Donation 2015 Quilt. LET'S GIVE KERRY LOTS AND LOTS OF SUPPORT AND LET HER KNOW HOW MUCH WE APPRECIATE HER.....

VOLUNTEERS NEEDED.....

Our First Event with the Donation Quilt 2015 will be **at the Brazos Valley Fair and Expo on October 17th, 18th and 19th.**

There are dates and various times on each day needed Friday/Oct. 17th, Saturday/Oct. 18th, and Sunday/Oct. 19th. You will sit with the Donation quilt and sell tickets. Please note that if you volunteer, you will get entry into the Brazos Valley Fair and Expo at no expense to you. Please call Kerry Dwyer at 979-574-1801 if you can be helpful in any way.

As Sue Sprott always says to me...."It Takes A Village" --- thank you so much for helping out if you can.

Norma Reel
President, BBQG





Donation Quilt Report

On Sept. 18, we have \$3661.26 toward our goal of \$6000.00. We have now raised an additional \$1,510 since I presented my report for the August newsletter. Remember, we need \$6,000.00 in donation funds to run the Guild for next year. If you need tickets, contact me and we can work together to get tickets to you. Thank you for all your help.

Quilt Show Report: If you have quilts for the in-house quilt show, please bring them to the Brazos Center on Oct 14, the normal date that the Guild meets. I will be there from about 10 a.m. to at least 2 p.m. If you cannot get the quilt there at this time, please contact me and we can make some type of arrangements to transfer your quilt. I also will need a few volunteers to help us hang the quilts.

Jo Ann Williams

Deb DeRoche's Trunk Show on September 9 was spectacular, demonstrating some of her wonderful talent.

Quilt Education Needs Volunteers for Booneville Days Celebration

Members: again this year, we have been invited to take part in the Booneville Days celebration at the Brazos Center on October 4, 2014. The hours will be 9 a.m. - 4 p.m.

Volunteers are needed for two-hour shifts; we will have hands-on projects for the kids to try out their sewing skills, designs for coloring for younger children and samples of quilts and blocks to show. It is a fun time to share our love of this hobby and art.

Lunch and beverages will be available for those over the noon hour.

If you would like to help, call me at (979) 696-0193 and leave a message or e-mail at willson.carol@gmail.com. No experience needed, come and have fun!

Thank you,
Carol Willson
Quilt Education

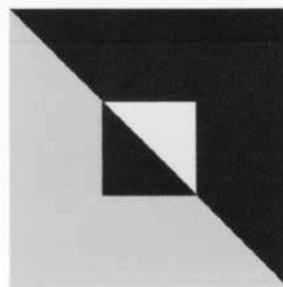


2014 BBQG Speaker/Workshop Information and Schedule

Oct. 14 - "Mini" Quilt Show & Pot Luck Dinner -
Assembly IV, Brazos Center

Nov. 11 - TBA - Room 102, Brazos Center

Dec. 9 - Christmas Party & Pot Luck Dinner -
Assembly IV, Brazos Center



Bridges Stitches
Long Arm Quilting Service
Linda Bridges
908 Pershing
College Station TX 77840
H(979) 696-3410 C(979) 255-0570
lindabridges75@gmail.com

Area Quilt Shows

October 3 & 4 - Jewett Fall Frolic Quilt Show - Jewett Civic Center, 111 N. Robinson, Jewett, TX 75846. Judged quilt show, quilt shops, quilt appraisals, scissor sharpener, old-fashioned bed turning, quilt auction baskets. For more information, call: 903-626-4202; on Facebook: www.facebook.com/fallfrolicquiltshow.

October 16-18 - Original Sewing & Quilt EXPO at the Will Rogers Memorial Center, 3401 West Lancaster Ave., Fort Worth, TX 76107. Exhibit Hall Hours: 10 a.m. - 6 p.m. Thursday and Friday; 10 a.m. - 5:30 p.m. Saturday. Sewing, quilting and embroidery; shopping, workshops, trunk shows, make-it take-its, how-to demos, fashion events and quilt displays. For more information, see www.sewingexpo.com.

February 19-22, 2015 - QuiltCon (the international show and conference of the Modern Quilt Guild)
Location: Austin Convention Center, 500 E Cesar Chavez St., Austin Texas 78701

February 22-26, 2015 - Applique Away on Galveston Bay
Go online for more information and to register:
www.appliqueawayongalvestonbay.com.



BBQG Meeting Minutes September 9, 2014

Brazos Center, Bryan, TX

The meeting was called to order on September 9, 2014 at the Brazos Center. **Sue Sprott** (incoming president) was subbing for Norma Reel who was out of town.

ARE YOU BEING RESPECTFUL ?

For the past several months, we have had regular complaints about people not being able to hear because of all of the talking. Clearly reminding people has not solved the problem, so in the spirit of a friendly reminder, Sue Sprott brought her whistle to remind us. She had to blow it a few times, but it did seem to do the trick for most of us.

QUILT PRESENTATION

To begin the meeting, **Luci Smith** was presented with a quilt entitled "Angels Watching Over You." This quilt had many different blocks made by her friends in the Guild and her bee. Each block was signed by the maker, and **Laura North** put it together and quilted it. The quilt was made to show our love and support in Luci's recovering from her stroke. [See above.]

WACO QUILT GUILD

The quilt guild from Waco was recognized and welcomed. They were selling raffle tickets on their beautiful pastel raffle quilt.

...continued on page 6



continued from page 5...

PRESIDENT QUILT TOP PRESENTATION

Nini Hodges made a presentation of a quilt top that she had made for **Sherrill Johnson** in celebration of her becoming the Guild President. [See page 3.] Nini noted that this was very late in being done; however, we were thrilled to see Nini as she has been extremely ill over a long time. It is a tradition in the Guild that the outgoing President presents a personally-made quilt top to the incoming president at the beginning of her term. **Another tradition is the Guild members show their appreciation for the outgoing officers by showering them with fat quarters as they leave office. This is a lovely expression of appreciation for the hard work your officers have done, so start going through your stash now.**

DONATION QUILT CHAIRPERSON OR COMMITTEE

We have still not had anyone sign up to replace Luci with the donation quilt. **Joann Williams** is currently organizing the donation quilt. She passed around the sign-up sheet for the Brazos Fair.

FALL FROLIC 2014 QUILT SHOW IN JEWETT

Teri Walker shared information about the Fall Frolic 2014 Quilt Show in Jewett. The show will be held at the Jewett Civic Center October 3-4. If you have entered quilts in the show, drop off for the quilts is Wednesday, October 1 between 9 and 1.

HELP WITH BOONEVILLE DAY

Carol Willson needs help with Booneville Days at the Brazos Center. She passed around a sign-up sheet to help. She has made up four patch kits for children to try their hand at quilting.

MINUTES

Minutes were approved with corrections by the group with Kerry Dwyer making the motion and JoAnn Williams seconding it. Thank you to Carol Willson for doing the August minutes when I was out of town.

MEMBERSHIP

Brenda Brown announced we had 78 members in attendance and 5 guests. Welcome to Camillia, Ester, Jackie, Mary and Debbie. Sue Millstead and Ann Gilwreath were recognized as new members.

BIRTHDAY'S AND PRIZES

Marti Fuller recognized the September birthday honorees. Happy Birthday to Betty Bugh, Sally Coble, Jane Crouse, Marian Dierchke, Alma Fonseca, Susan Kelly, Melody Nelson, Barbara Neyses, Laura North, Julie Sabsula, Alice Shinn, Carolyn Stigler, Cindy Stitt, Sherry Teller, Charline Watz, Shirley Woods and Sue Ryan.

Door Prizes were provided by Lonestar Quiltworks, Mary Radke, Luci Smith, and Country Living Quilts.

Prizes were won by Pat Patterson, Laura North, Dee Rogers and Charlotte Simpson.

SUNSHINE AND SHADOWS

Lynn Thurston reported that sympathy cards were sent to Kerry Dwyer, Peggy Leach and Kathy Davis for the loss of their mother and grandmother.

BLOCK OF THE MONTH

Charlotte Simpson showed the new block for the month. Debbie Ginn won the block turned in.

DONATION QUILT TICKET SHORTFALL

Sue Sprott explained what the monies raised through the donation quilt did to support the Guild's mission. [See page 3.] We are currently short \$3,000.00 with only a few weeks to sell tickets. She challenged people to purchase tickets. She used a blank price tag to illustrate that everything we do, attend, or support has a cost to it. Membership dues do not cover all of our programs. She provided us with a mock budget to show our expenses. Bottom line is if we want to continue to operate as we are, each and everyone one of us have a responsibility to sell tickets. This is not something you can expect others to do because you are too busy. It is for all of us to do.

SMALL QUILT SHOW

October 14 is our small quilt show. **JoAnn Williams and Maggie McGuire** need help in setting up. We will be at the Brazos Center from 10 a.m. until we are finished (probably 1 p.m., depending on how many show up to help) to hang challenge quilts and set up for dinner. **Nadeen Stuth** will be available to take in the Challenge quilts at that time.

...continued on page 7



continued from page 6...

The Guild is providing the ham. If you have forgotten what you are bringing, the following is what you said you would bring:

Hot Vegetable
Squash Casserole Carol Stigler
? Alice Shinn
Green Bean Deloris Rydell
? Kim DeBona
Baked Beans Mary Radke

Cold Vegetable
Potato salad Judy B.
? Charles Gilreath
veggie platter Nancy Searcy
cucumber and tomato salad Carol Willson
slaw Peggy Mobley

Ice Tea
Sweet Janice Drees
Sweet Kerry Dwyer
Un Michael Jackson
Un Deb DeRoche

Rolls
Mary Gammon
Sue Ryan
Sue Sprott

Salads Cold
JoAnn Williams
Elaine Lorange
Cathleen Auld
Marty Fuller
Marijane Deen

Salads Other
Macaroni Salad
Coleslaw salad Lynn Thurston
Copper Pennies Kassie Collins
Spinach Salad Linda Winder
Roweena Reel

Desserts
You know who you are.....

PLEASE HAVE ALL FOOD ON THE TABLE BY 6:15 unless you are working late. WE WILL EAT AT 6:30.

2015 QUILT SHOW

Rebecca Fielding announced the date for the large quilt show. The show will be on an away-game weekend, September 4 and 5, 2015. The theme will be "30 YEARS; DIAMOND AND PEARLS." Teri Walker showed the new donation quilt [See next column.] and thanked everyone who helped finish the top. Linda Bridges and Laura North will be quilting it. The measurements are 101" by 104."



PROGRAM COMMITTEE

Linda Bridges and **Maggie McGuire** are the new program chairs for 2015. They gave a short report on what is coming up in the new year.

PROGRAM

Linda Bridges introduced **Deb DeRoche** our speaker for the evening. Deb is a local quilter of extraordinary talent. She had brought a variety of quilts that she had designed throughout the years. All of her quilts were laid across a large table and she spoke about each one as they came to the top of the pile. This was described as a "Bed Turning". Deb highlighted techniques that she used in designing each quilt and gave us tips and tidbits about each one. [See a tessellation quilt by Deb below.]



NOMINATING COMMITTEE

The nominating committee is meeting for 2016 board members. If you are contacted please consider the position. If you would like a position, please contact Norma. For those of you who are new to the Guild, you will not be thrown into a position, but will be offered the opportunity to shadow the position you will be taking over for the next year.

SHOW AND TELL

We had a full line up and all of the quilts were lovely.

Respectfully Submitted by

Maggie McGuire
Secretary

This Block of the Month is due before the
BBQG meeting on October 14, 2014.

Corner stone
12 ½ unfinished
From "The Union Quilter"
By Jennifer Ciaverini
Due October

Cut 1----5" sq from the red

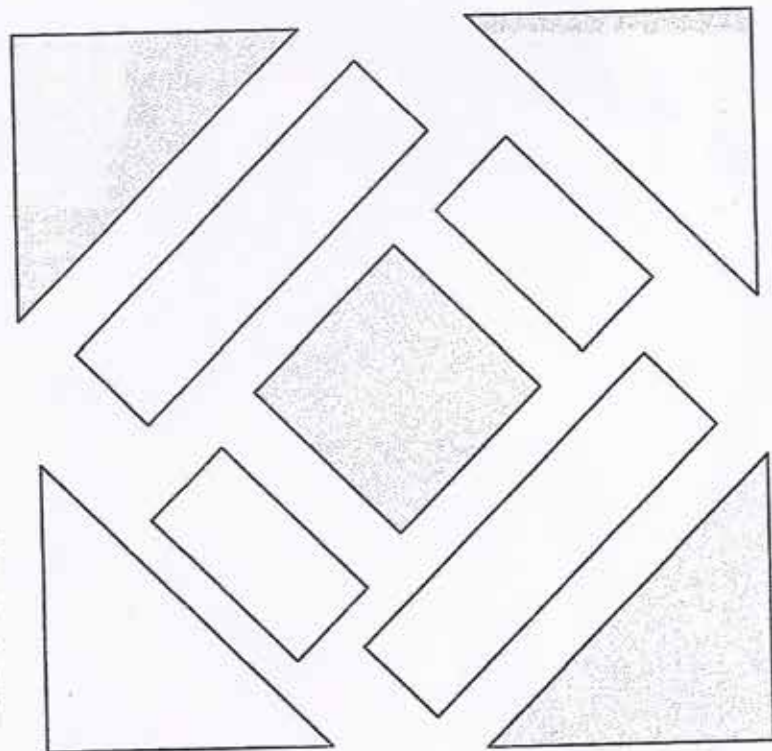
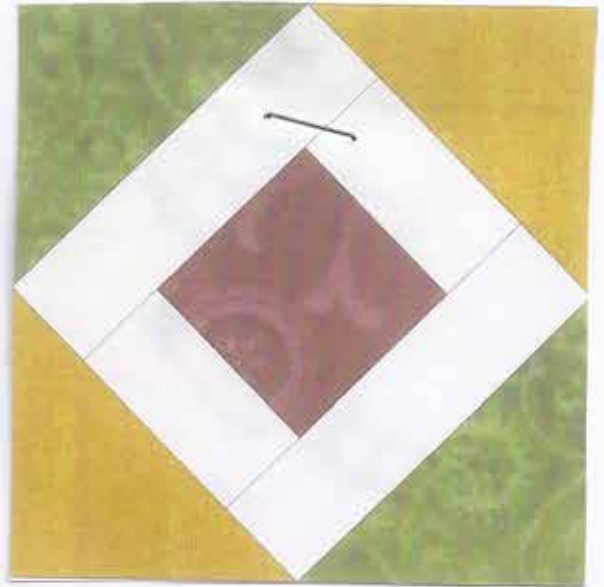
Cut 2---- 2 1/2" X 9" from white

Cut 2----2 ½" X 5" from white

Cut 2----6 ½" sq from green &
Gold

Cut each sq diagonally once.

Happy Sewing!!!!!!!



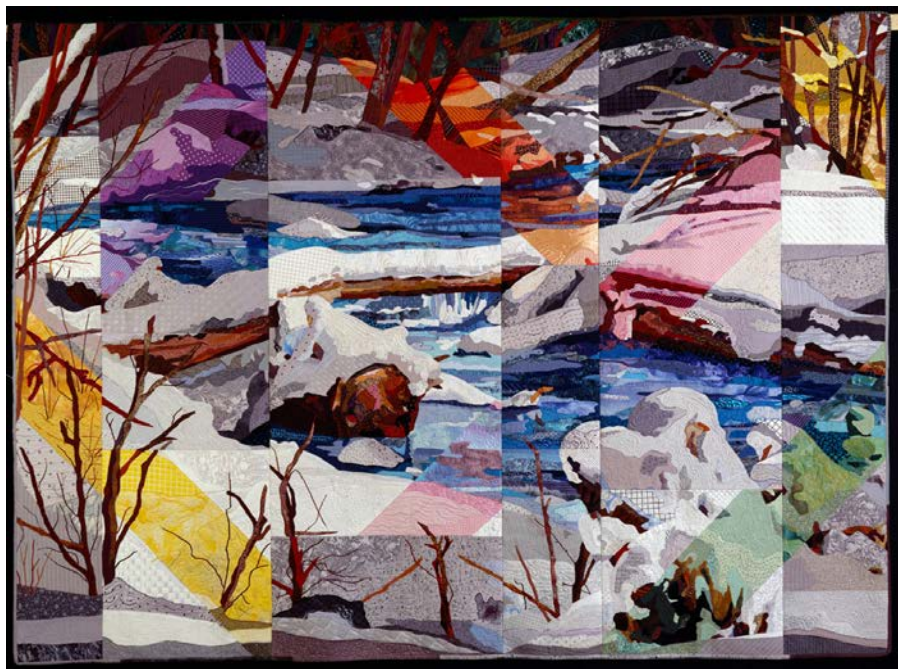


Largest exhibit of collection ever

Contemporary art quilts from the famed John Walsh Collection make Museum debut

September 12, 2014 – The fall exhibit at the Texas Quilt Museum in La Grange will feature a stunning, once-in-a-lifetime display of contemporary art quilts from one of the country's most renowned privately-held fabric art collection in **"Art Quilts from the John M. Walsh III Collection."**

The exhibit features 54 works, the largest number of the Collection's quilts ever shown in one venue at the same time. The exhibit is on display from October 2-December 21. **Museum Curator Dr. Sandra Sider and Mr. Walsh will lead a gallery talk and Q&A session on Saturday, October 4, from 4:30-6 p.m. Admission is free.**



***Rio Hondo* by Katie Pasquini Masopust, 46" x 60"**

"The Texas Quilt Museum's blockbuster exhibition from John M. Walsh III is a world-class collection of contemporary quilt art, with more than half of the Walsh quilts on view," Dr. Sider offers. "Artists in the exhibition include renowned makers whose careers span four decades, as well as emerging artists championed by Mr. Walsh."

in 1992, spurred on by a BBC program featuring noted quilt artist Michael James. Of the 100 quilts in the collection (which grows by four or five works per year), many are on the theme of water.

Mr. Walsh began purchasing studio art quilts

(more)

It's a subject close to Walsh's heart as the retired CEO of Waltron LLC, manufacturer of water analysis and purification devices used in countries around the world. Walsh spent a total of 55 years with the firm and now has the title of Chairman Emeritus. Twenty-four of the quilts on display at the Museum feature that theme, some specially commissioned by Walsh.

The list of artists for this spectacular exhibition reads like a "Who's Who" of contemporary quilt art, including Michael James, Therese May, Terrie Hancock Mangat, Nancy Crow, Linda Colsh, Velda Newman, Susan Shie, Arydyth Davis, and Robin Schwalb.

"We're thrilled to showcase this preeminent contemporary quilt art collection at the Museum. It will be the first time many visitors have the chance to see it, and that chance may not come again soon," say Museum co-founders Karey Bresenhan and Nancy O'Bryant Puentes. "And the contrast with our restored 19th century buildings should be visually exciting,"

Generous contributors to an IndieGoGo campaign helped raise the \$4,500 cost to ship the quilts to the non-profit Texas Quilt Museum.



Lay of the Land by Valerie S. Goodwin, 54" x 84" triptych

The Texas Quilt Museum is located at 140 W. Colorado St., La Grange, Texas 78945. It opened in 2011 and is housed in two 19th-century buildings in the Historic District of La Grange. Its restoration has won both Preservation Texas and Main Street awards. The Museum complex also includes a period Texas garden with a monumental 13' x 85' outdoor mural, Quilts: History in the Making, as its focal point. Learn more at www.texasquiltmuseum.org